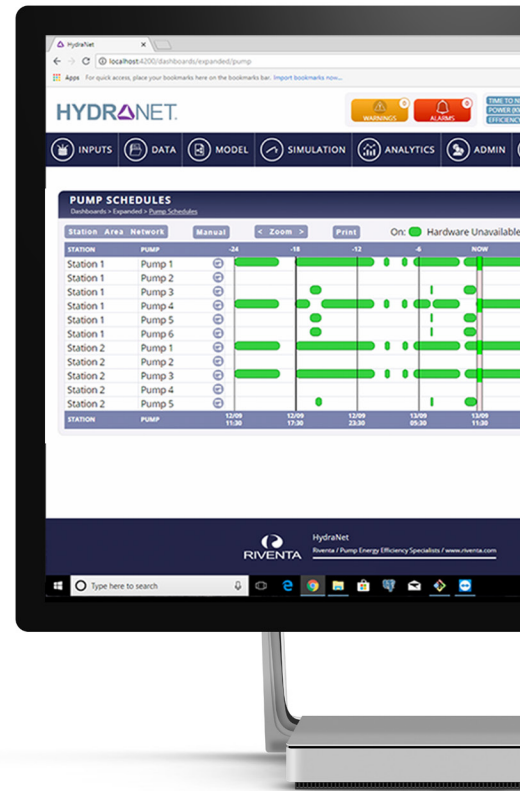
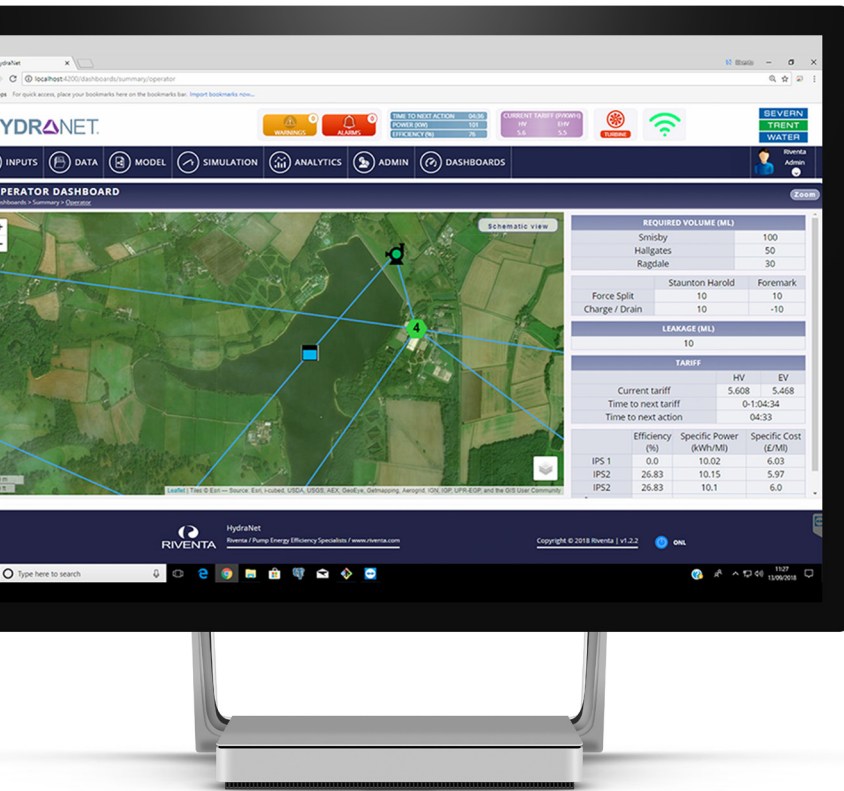


Riventa Ltd (UK)
 Unit B1, Walker Business Park
 Threemilestone Ind Est
 Threemilestone, Truro
 Cornwall TR4 9FB, UK

Contact:
 Telephone: +44 (0) 1872
 260005
 Email: info@riventa.com
 www.riventa.com



HydraNet is our ERP software platform for monitoring industrial pumping systems – from simple pump assessments through to whole-company network optimisation.



Cloud-based or locally-hosted, HydraNet comes with **in-built analytics and auto-reporting**, features for managing **OPEX and CAPEX**, customisable **alarms and warnings**, and a **GIS interface**.

It provides a fully-customisable management dashboard, which contains dynamic live data and provides an overview of day-to-day pump performance, condition and reliability. This delivers real-time decision support to your operators or existing automated control system. So, whether you're planning upgrades on a 25-year time frame, or minimising use today, HydraNet will enable you to optimise pumping operations.

WHY HYDRANET?

- Optimises pumping operations
- Reduces operating costs
- Maximises ROI for finite maintenance budgets
- Delivers real-time decision support to operators
- Offers high UX through cross-platform construction
- Utilises class-leading algorithms for accuracy and speed of convergence
- Cloud-based or locally-hosted
- Fully IIOT compatible

In-built analytics and auto-reporting

- Delivers pump performance data (including efficiency) to ISO5198 and ISO9906.
- Creates a virtual, mathematically derived flow meter on every pump (using our patented ECOFLOW algorithm).
- Reports performance at levels – machine, station, area, network and business.
- Highlights efficiency gains and savings made through optimisation, and also any benefits not realised through not complying with the recommended schedule.
- Calculates optimum pumping schedules to transfer or distribute water at least cost.
- Allows users to create virtual measurements – from engineering parameters to business specific KPIs.

Capital Expenditure (CAPEX) features

- Enables loading of post refurbishment, new and alternative sizing pump characteristics for all machines.
- Builds a business case for pump refurbishments, renewal and resizing – all calculated in real-time for each machine.
- Automatically calculates highest level of savings using finite maintenance budgets and work scopes (which projects to do).
- Tracks spend and save profile to ensure these meet business criteria.
- Fully assists project management: all business cases and rolling programme statuses are automatically calculated, reported and emailed as a scheduled task.

Alarms and warnings

- Warning and alarm level can be fully configured, such as low efficiency.
- Set amount of pump wear / deviation from the OEM curve.
- Pump performance is outside preferred operating boundaries according to ISO 13709 / API 610.
- Mechanical condition monitoring limits to ISO10816.
- Any problem in pump or motor health or performance.
- Simple limits to complex multi parameter relationships – all user definable and editable.

GIS interface

- Contains dynamic live data and live alarms for all pumps and locations.
- Interface includes standard and user-defined 'widgets' for easy and specific KPI monitoring (e.g. tariff status, active alarms, system health).